



161 Alden Road, Units 7 & 8, Markham, Ontario Canada L3R 3W7  
 Tel: +1 416 754-3322 Fax: +1 416-754-3299  
 Email: info@edac.net http://www.edac.net

**ENGINEERING CHANGE NOTICE**

Originator: Yu Zhang  
 Phone No. (416) 754-3322 ext.234  
 Email Address: yzhang@edac.net  
 Department ENGINEERING

Date:	Document Number
June 11, 2019	ECN20190611-00
ECN Revision Number	SHEET
1	1 of 1
Part Number	Dwg Revision Number
342-240-318	13

**CHANGE TYPE**

- CLASS I Customer notification and approval required prior to implementation  
 CLASS II Customer notification only, no approval required  
 CLASS III No customer notification required

**REASON OF CHANGE**

EDAC manufacturing has decided to EOL P/N 342-240-318.

**DESCRIPTION OF CHANGE:**

Tooling worn out, and now decommissioned due to non usage of part.

**PARTIES AFFECTED**

- Customer  
 Distributors  
 Suppliers
- NORCOMP  
 MH  
 ETW
- ECA  
 EDG  
 EDAC UK

**KEY TARGET DUE DATES IF CHANGE IS APPROVED TO PROCEED** (check if applicable and show target dates as known)

- Submit Quote \_\_\_\_\_  
 Prod. Trial Run \_\_\_\_\_  
 Run at Rate \_\_\_\_\_
- PPAP from Supplier \_\_\_\_\_  
 MRD of Production Parts \_\_\_\_\_

**ACKNOWLEDGEMENT FOR ECN INITIATION: (OPTIONALS)**

<input type="checkbox"/> Tooling Rep _____	<input type="checkbox"/> Process Eng Rep _____
<input type="checkbox"/> Mfg Eng Rep _____	<input type="checkbox"/> Facilities Rep _____
<input type="checkbox"/> Production Rep _____	<input type="checkbox"/> Sales Rep. _____
<input type="checkbox"/> Materials Rep _____	<input type="checkbox"/> Product Eng. Rep. _____
<input type="checkbox"/> Quality Rep _____	<input type="checkbox"/> Purchasing Rep _____

**STATUS**

APPROVED   
 CCS CHANGE REQUEST # \_\_\_\_\_

**APPROVALS FOR ECN INITIATION (REQUIRED)**

**President** \_\_\_\_\_  
  **Vice President** Bob Sakitkovski

**Engineering Manager** Ronnie Sta. Monica  
  **Mechanical Engineer** Yu Zhang

**MINIMUM OF TWO SIGNATURES REQUIRED**

REJECTED   
 Change REJECTED by: \_\_\_\_\_  
 Rejected Date: \_\_\_\_\_

THIS IS A C.A.D. GENERATED DRAWING  
DO NOT MAKE MANUAL REVISIONS TO MASTER.



\* UNLESS OTHERWISE SPECIFIED TOLERANCES  
ON DECIMAL IS:  
FRACTION  $\pm 1/32$  4 PLACE  $\pm .0001$   
2 PLACE  $\pm .01$  5 PLACE  $\pm .000050$   
3 PLACE  $\pm .005$  6 PLACE  $\pm .000020$

ISSUE NUMBER

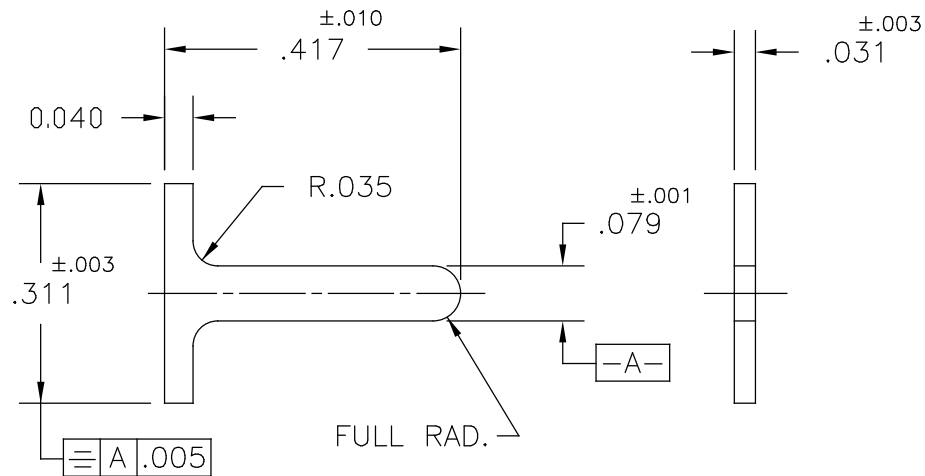
ORIGINAL (1)


RE-DRAWN AND  
DIM.  $417 \pm .010$  WAS  $.418 \pm .005$   
DWG. NO. WAS 342-240-001  
F.BRIONES FEB. 18/02 (12)

ADD DIM .040 (13)  
R.STA.MONICA MAY.3/2019

NOTES:

- PART NUMBER 342-240-318 MATERIAL: NYLON 6/6 NATURAL
- PART NUMBER 342-240-318N MATERIAL: NEMA GRADE G-10 EPOXY  
MEDIUM GLASS CLOTH CONSTRUCTION PER MIL-P-18177, TYPE GEE
- PART NUMBER 342-240-318 MADE FROM 345-241-318  
PART NUMBER 342-240-318N MADE FROM 336-240-318



342 POLARIZING TAB		ACAD REFERENCE NO. 342-240-318	
		DRAWN: F.BRIONES	DATE: FEB. 18/02
 EDAC INC TORONTO, ONTARIO CANADA YOUR CONNECTION TO QUALITY & SERVICE		CHECKED:	DATE:
		SCALE: (IN C.A.D. 1:1)	SHEET 1 OF 1
THESE DRAWINGS AND SPECIFICATIONS ARE THE PROPERTY OF EDAC INC., AND SHALL NOT BE REPRODUCED, OR COPIED OR USED AS THE BASIS FOR THE MANUFACTURE OR SALE OF APPARATUS WITHOUT WRITTEN PERMISSION.		DRAWING NUMBER	
		342-240-318	
		ISSUE	
		13	