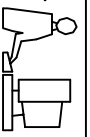
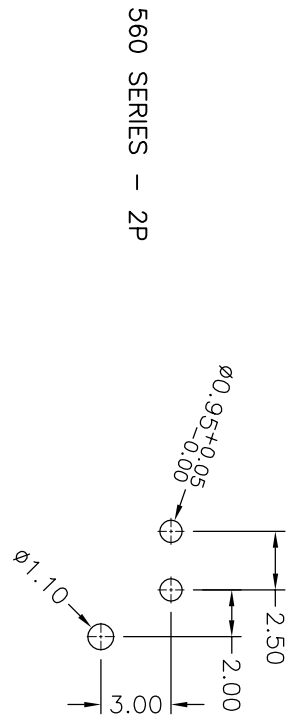


THIS IS A C.A.D. GENERATED DRAWING
DO NOT MAKE MANUAL REVISIONS TO MASTER.

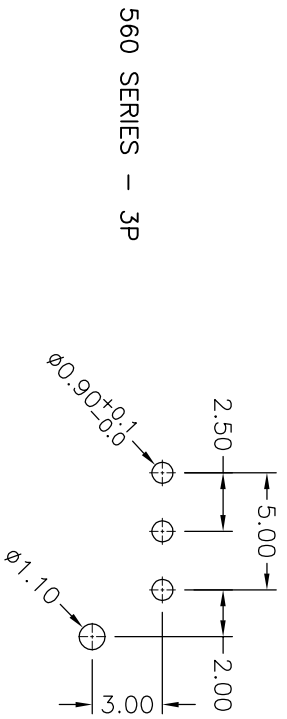
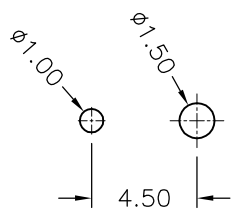


* UNLESS OTHERWISE SPECIFIED TOLERANCES
ON DECIMAL IS:
UNIT: MM

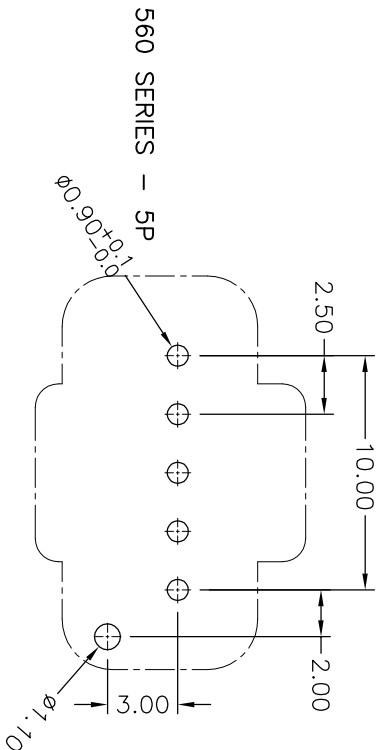
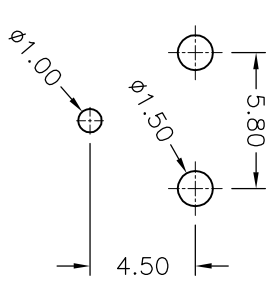
ISSUE NUMBER
① ORIGINAL
② $\phi 0.95$ WAS $\phi 0.90$
$\phi 1.50$ WAS $\phi 1.60$
R.S.M. APR03/2019



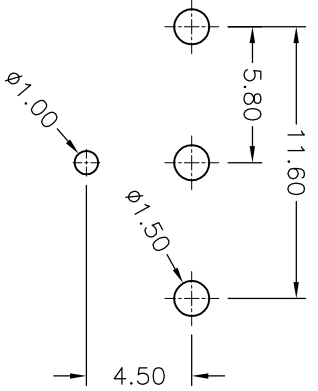
572 SERIES - 1P



572 SERIES - 2P



572 SERIES - 3P



RECOMMENDED PCB FOOTPRINT
TOLERANCE: ± 0.05
PCB THICKNESS: 1.60MM

560 AND 572 SERIES PCB FOOTPRINT
PCB HEADER CONNECTOR

EDAC INC
TORONTO, ONTARIO
CANADA
YOUR CONNECTION TO QUALITY & SERVICE

THESE DRAWINGS AND SPECIFICATIONS
ARE THE PROPERTY OF EDAC INC. AND
SHALL NOT BE REPRODUCED, COPIED
OR USED AS THE BASIS FOR THE
MANUFACTURE OR SALE OF APPARATUS
WITHOUT WRITTEN PERMISSION.

ACAD REFERENCE NO. 560_572 PCB FOOTPRINT	
DRAWN: R.STA.MONICA	DATE: SEPT.19/2017
CHECKED:	DATE:
SCALE: (IN C.A.D. 1:1)	SHEET 1 OF 1
DRAWING NUMBER	ISSUE
560_572 PCB FOOTPRINT	2