



161 Aiden Road, Units 7 & 8, Markham, Ontario Canada L3R 3W7  
 Tel: +1 416 754-3322 Fax: +1 416-754-3299  
 Email: info@edac.net http://www.edac.net

**ENGINEERING CHANGE NOTICE**

Originator: _____	Harsh Patel	Date:	Document Number
		January 5, 2021	ECN20210105-00
Phone No. _____	(416) 754-3322	Revision Number	SHEET
Email Address: _____	Hpatel@edac.net	1	1 of 3
Department _____	ENGINEERING		

**CHANGE TYPE**

CLASS I Customer notification and approval required prior to implementation

CLASS II Customer notification only, no approval required

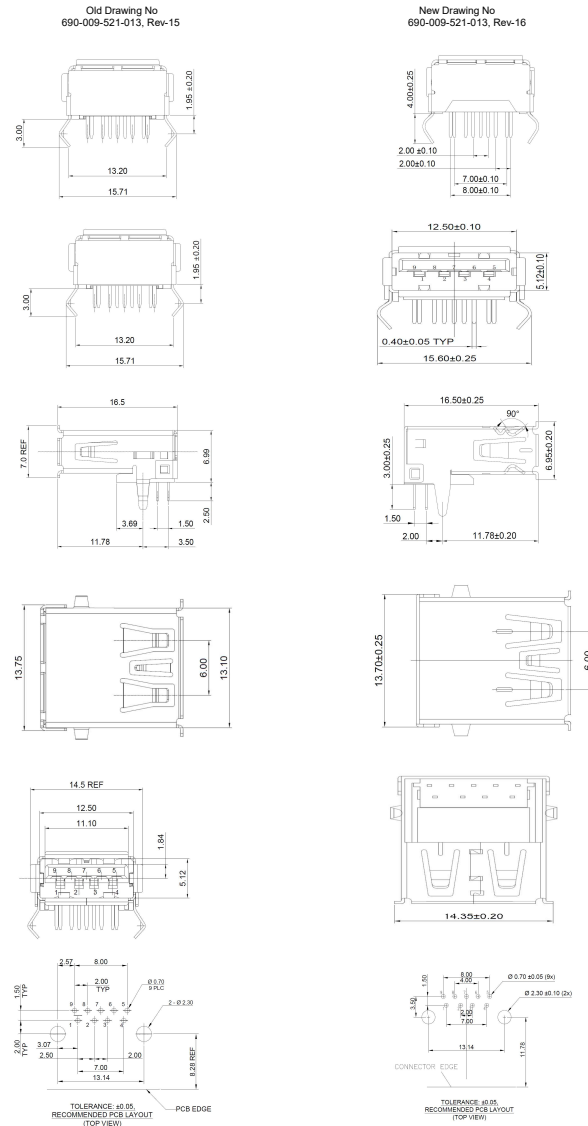
CLASS III No customer notification required

**REASON OF CHANGE**

New Tooling implemented for USB-A RECEPTACLE 90 Degree DIP, Applicable for Part No's:-690-009-521-013, 690-009-521-313, 690-009-621-013, 690-009-621-313.

**DESCRIPTION OF CHANGE:**

1. Old tooling has worn out and need to be replaced by standard tooling.



2. Effective implementation to distribution is on January 05, 2021  
 Note:- There is no change in form, fit and function in new revision..

**PARTIES AFFECTED**

<input checked="" type="checkbox"/> Customer	<input type="checkbox"/> NORCOMP	<input checked="" type="checkbox"/> ECA
<input checked="" type="checkbox"/> Distributors	<input type="checkbox"/> MH	<input checked="" type="checkbox"/> EDG
<input type="checkbox"/> Suppliers	<input checked="" type="checkbox"/> ETW	<input checked="" type="checkbox"/> EDAC UK

**KEY TARGET DUE DATES IF CHANGE IS APPROVED TO PROCEED** (check if applicable and show target dates as known)

<input type="checkbox"/> Submit Quote _____	<input type="checkbox"/> PPAP from Supplier _____
<input type="checkbox"/> Prod. Trial Run _____	<input type="checkbox"/> MRD of Production Parts _____
<input type="checkbox"/> Run at Rate _____	

**ACKNOWLEDGEMENT FOR ECN INITIATION: (OPTIONALS)**

Tooling Rep _____	Process Eng Rep _____
Mfg Eng Rep _____	Facilities Rep _____
Production Rep _____	Sales Rep _____
Materials Rep _____	Product Eng. Rep. _____
Quality Rep _____	Purchasing Rep _____

**STATUS**

APPROVED

CCS CHANGE REQUEST # \_\_\_\_\_

**APPROVALS FOR ECN INITIATION (REQUIRED)**

	President _____		Engineering Manager _____	Ronnie Sta. Monica
	Vice President Bob Saktkovski		Mechanical Engineer _____	Harsh Patel

**MINIMUM OF TWO SIGNATURES REQUIRED**

**REJECTED**

Change REJECTED by: \_\_\_\_\_

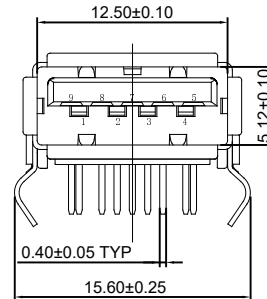
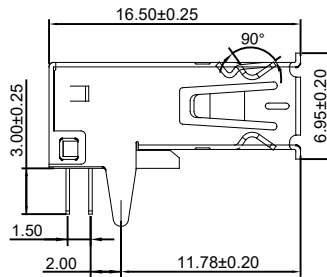
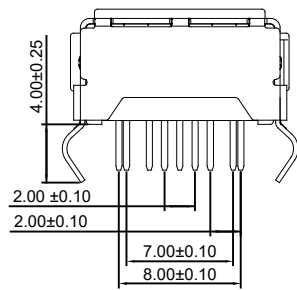
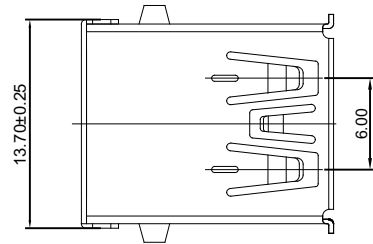
Rejected Date: \_\_\_\_\_

TOLERANCE:	
X	±0.40
X.X	±0.30
X.XX	±0.25
X.XXX	±0.15
X. <sup>o</sup> ±1*	X.X <sup>o</sup> ±0.05*

THIS IS A C.A.D. GENERATED DRAWING  
DO NOT MAKE MANUAL REVISIONS TO MASTER.

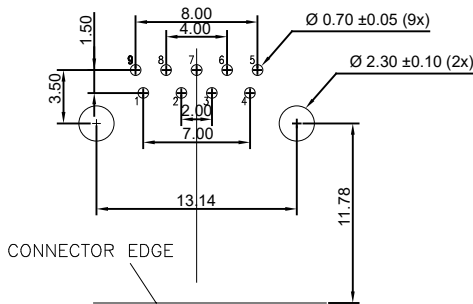
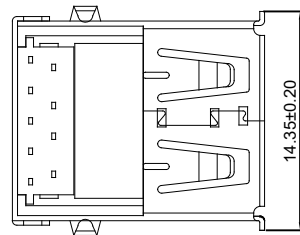


ISSUE NUMBER	
ADD P/N: 690-009-521T013 AND 690-009-621T013 R.STA.MONICA JUN.01/10	8
690-009-521-313 WAS 690-009-521T013 AND 690-009-621-313 WAS 690-009-621T013, ADD TAPE & REEL AND PCB TOLERANCE R.STA.MONICA JUN.07/10	9
ADD POSITION NOS. AT PCB LAYOUT F.BRIONES MAY.11/2012	10
300PCS WAS 350PCS/REEL R.STA.MONICA NOV.20/2014	11
UPDATE DRAWING	12
LCP WAS PBT UPDATE NOTE H.D AUG.20/2019	13
13.20 WAS 13.10 3.00 WAS 3.70 H.D AUG.28/2019	14
1.95 WAS 2.05 ADD PCB LAYOUT HOLE DIA. ADD PACKAGING DWG. FOR 690-009-621-013 P.M. OCT. 17/2019	15
REDRAWN P.M. JAN. 05/2021	16



NOTE:

- MATERIAL:  
HOUSING: PA9T+30%GF, UL94V-0, BLUE  
CONTACT: COPPER ALLOY  
SHELL: COPPER ALLOY
- FINISH:  
CONTACT: SELECTIVE GOLD PLATING (SEE TABLE),  
WITH 50u" MIN. TIN PLATING ON SOLDER TAIL AREA,  
ALL OVER 30u" MIN. NICKEL UNDERPLATING.  
SHELL: 50u" MIN. NICKEL UNDERPLATING OVER ALL.
- SPECIFICATION:  
3.1: VOLTAGE CURRENT RATING: 1.5 A. 30V AC  
INSULATION RESISTANCE:  
100MΩ MIN. AT 100V DC FOR 1MINUTE.  
WITHSTANDING VOLTAGE: 100V AC FOR 1MINUTE  
CONTACT RESISTANCE:  
30MΩ(MAX) INITIAL FOR VBUS AND GND CONTACTS.  
50MΩ(MAX) INITIAL FOR ALL OTHER CONTACTS.  
3.2: CHARACTERISTICS:  
MATING FORCE: 35N(3.57KGF) MAX.  
UNMATING FORCE(WITHOUT LOCK):10N(1.02KGF) MIN.  
DURABILITY: 1500 CYCLES MIN.  
4: OPERATING TEMPERATURE: -55°C TO +85°C



TOLERANCE: ±0.05,  
RECOMMENDED PCB LAYOUT  
(TOP VIEW)

PART NUMBERS	GOLD PLATING	PACKAGING DETAIL
690-009-521-013	15 u" OF GOLD	TAPE AND REEL
690-009-521-313	15 u" OF GOLD	PLASTIC TRAY
690-009-621-013	30 u" OF GOLD	TAPE AND REEL
690-009-621-313	30 u" OF GOLD	PLASTIC TRAY



THIS SERIES FULLY CONFORMS TO  
THE EUROPEAN UNION DIRECTIVES  
2011/65/EU FOR RoHS COMPLIANCY.

USB-A RECEPTACLE 90° DIP, 3.0 VERSION

**EDAC** EDAC INC  
TORONTO, ONTARIO  
CANADA  
YOUR CONNECTION TO QUALITY & SERVICE

THESE DRAWINGS AND SPECIFICATIONS  
ARE THE PROPERTY OF EDAC INC., AND  
SHALL NOT BE REPRODUCED, OR COPIED  
OR USED AS THE BASIS FOR THE  
MANUFACTURE OR SALE OF APPARATUS  
WITHOUT WRITTEN PERMISSION.

ACAD REFERENCE NO.	690-009-521-013	
DRAWN: C.B	DATE: AUG.16/16	
PART NUMBER	SEE ABOVE	
DRAWING NUMBER	690-009-521-013	SHEET 1 OF 2
		ISSUE 16

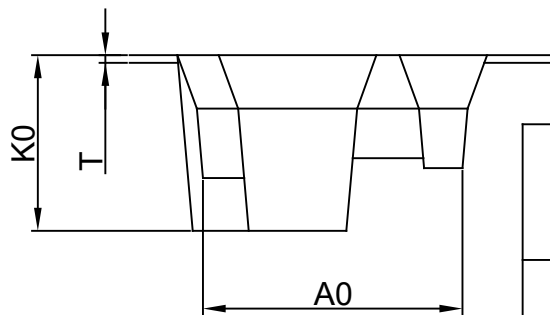
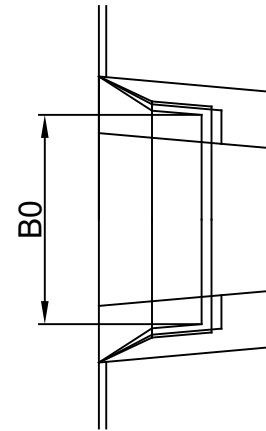
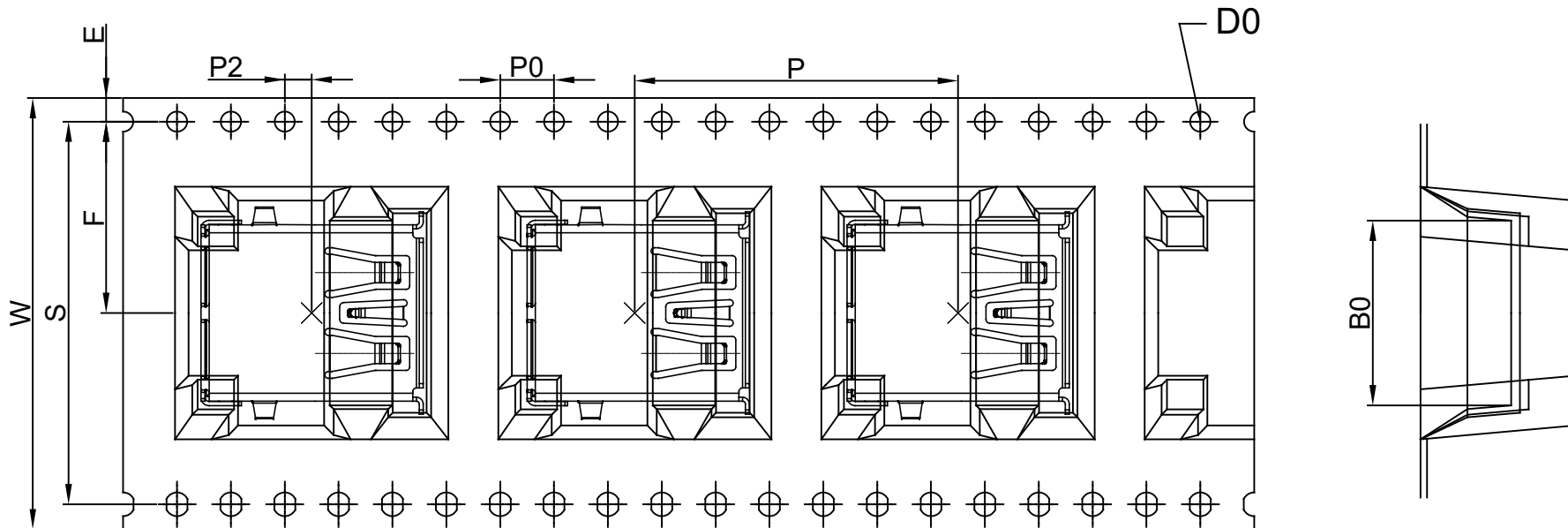
W	32.00 ± 0.30	P	24.00 ± 0.10	A0	17.00 ± 0.10	B0	13.70 ± 0.10
S	28.40 ± 0.10	P0	4.00 ± 0.10	A1		B1	
E	1.75 ± 0.10	P2	2.00 ± 0.10			B2	
F	14.20 ± 0.10	D0	$\varnothing 1.50 \begin{smallmatrix} + 0.10 \\ - 0 \end{smallmatrix}$	K0	11.5 ± 0.10	K1	
T	0.50 ± 0.05	D1					

TOLERANCE:	
X	±0.40
XX	±0.30
XXX	±0.25
XXXX	±0.15
X° ±1°	X.X° ±0.05°


THIS IS A C.A.D. GENERATED DRAWING  
DO NOT MAKE MANUAL REVISIONS TO MASTER.



- 1- Accumulated error of any ten chain holes does not exceed +/- 0.2 mm
- 2- Non-parallel of distance of 250mm in the longitudinal direction of the carrier tape shall not exceed 1mm
- 3- Material: black, PS.
- 4- All dimensions meet the requirement of 'EIA-481-D'
- 5- 13" disk, 5.4m per reel. 200pcs. Leave 14pcs empty at start and another 14 pcs at end.
- 6- Meet ROHS



THIS SERIES FULLY CONFORMS TO  
THE EUROPEAN UNION DIRECTIVES  
2011/65/EU FOR RoHS COMPLIANCY.

<b>TAPE &amp; REEL PACKAGING</b> <b>FOR 690-009-621-013</b>		ACAD REFERENCE NO. 690-009-521-013	
		DRAWN: P.M.	DATE: OCT. 17/2019
 <b>EDAC INC</b> TORONTO, ONTARIO CANADA YOUR CONNECTION TO QUALITY & SERVICE		<b>690-009-621-013</b>	
		SHEET 2 OF 2	
THESE DRAWINGS AND SPECIFICATIONS ARE THE PROPERTY OF EDAC INC., AND SHALL NOT BE REPRODUCED, OR COPIED OR USED AS THE BASIS FOR THE MANUFACTURE OR SALE OF APPARATUS WITHOUT WRITTEN PERMISSION.		DRAWING NUMBER 690-009-521-013	
		ISSUE 16	